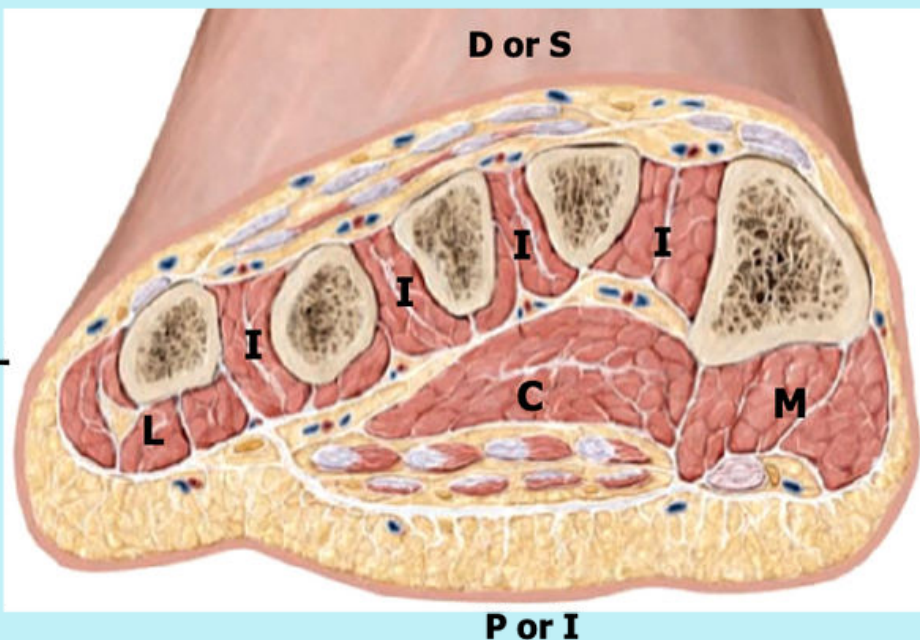
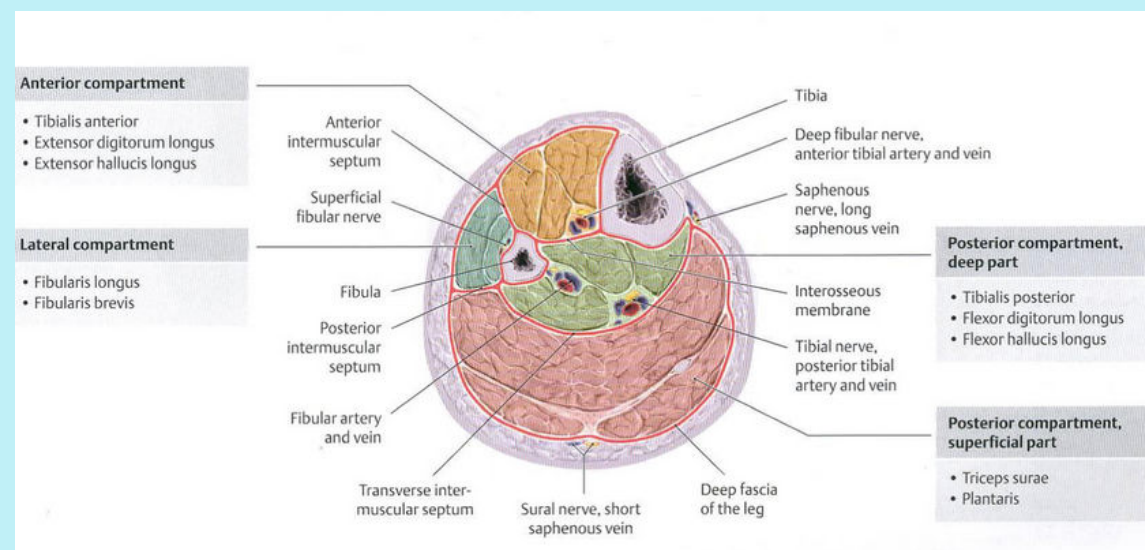


# Compartment Syndrome

- **Normal Compartment Pressure - 0-8 mmHg**
- Capillary blood flow is compromised when tissue/compartments pressure increases to within 25-30 mmHg of arterial pressure
- Ischemia occurs when tissue pressure reaches diastolic pressure
- **Recommendations to diagnose acute compartment syndrome (ACS)**
  - Diastolic blood pressure - compartment pressure = 30 mmHg or less
- **Complications of missed ACS diagnosis**
  - muscle contracture
  - neurological complications
  - paralysis
  - rhabdomyolysis --> myoglobinuria --> renal failure



9 compartments in foot



4 compartments in leg