

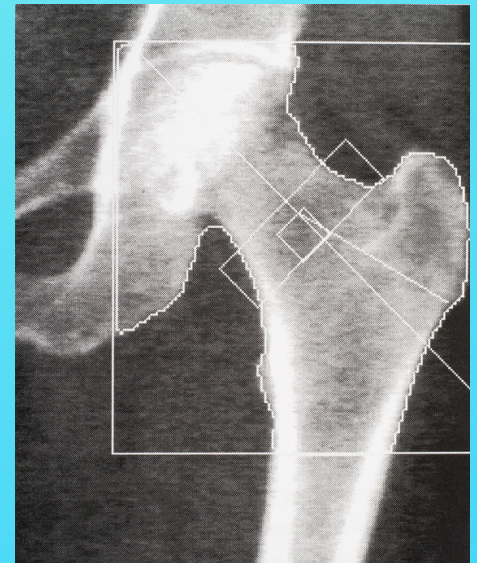
# DEXA Scan

## (Dual-Energy X-ray Absorptiometry)

**DEXA Scan** - best method to monitor changes in bone mineral density over time

- Measures bone mineral content (BMC) and bone area (BA) then calculates bone mineral density (BMD) in g/cm<sup>2</sup>
- **T-score** - value used for diagnosis of osteoporosis
  - calculated by subtracting the mean BMD of a reference population from the patient's BMD and then dividing by the SD of a young adult population

Diagnosis	T-score
Normal	$\geq -1.0$
Low bone mass (osteopenia)	Between -1.0 and -2.5
Osteoporosis	$\leq -2.5$
Severe Osteoporosis	$\leq -2.5$ and fragility fracture



- **Z-score** - used to compare the patient's BMD to a population of peers
  - Interpretation
    - Z-score of -2 or lower --> below the expected range for age