

Max Doses of Local Anesthetics

Lidocaine plain (without epinephrine).

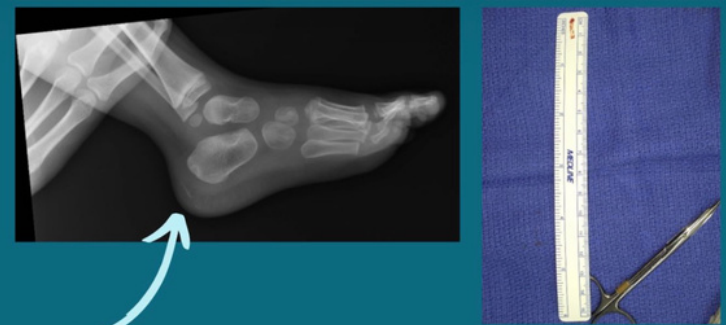
- Max dose of Lidocaine - 4.5 mg/kg

Max dose of 1% lidocaine plain for a 10 kg patient

- $4.5 \text{ mg/kg} \times 10 \text{ kg} = 45 \text{ mg}$
- 1% Lidocaine has 10 mg of lidocaine per 1 mL of injectable
- $45 \text{ mg} / 10 \text{ mg/mL} = \mathbf{4.5 \text{ mL}}$

Max Dose of Local Anesthetics

- Lidocaine with epinephrine - 7 mg/kg
- Bupivacaine
 - plain - 2 mg/kg
 - with epinephrine - 3 mg/kg
- Mepivacaine
 - plain - 5 mg/kg
 - with epinephrine - 7 mg/kg
- Procaine (Novocaine)
 - plain - 7 mg/kg
 - with epinephrine - 9 mg/kg



What is the max dose of 1% lidocaine plain that can be injected into a 10 kg child to remove this foreign body?

ANSWER CHOICES

(A) 2 mL

(B) 4.5 mL

(C) 10 mL

(D) 30 mL